



# FAIRVIEW PARK MASTER PLAN UPDATE

Fairview Park Community  
Workshop #2

September 4th, 2024



# Introductions

## Costa Mesa Staff

- Kelly Dalton - *Fairview Park Administrator*
- Brian Gruner - *Parks and Community Services Director*

## MIG Team

- Jenni Zell - *Project Manager*
  - Jose Gutierrez - *Landscape Designer*
  - Melissa Butler - *Landscape Architect*
  - Alfonso Ramirez - *Engagement Associate*
- 
- Travis Brooks - *Land IQ*
  - Robb Hamilton - *Hamilton Biological*

# Agenda

1. Introductions
2. Presentation
  - Project Progress Overview
  - Presentation of Draft Recommendations
3. Open House Stations
4. Next Steps
5. Adjourn







# Project Progress Overview



# Biological Resources



#### Asteraceae – Sunflower Family

- Achillea millefolium*, Common Yarrow
- Ambrosia acanthicarpa*, Annual Bursage
- Ambrosia psilostachya*, Western Ragweed
- Artemisia californica*, California Sagebrush
- Artemisia douglasiana*, California Mugwort
- Artemisia dracunculus*, Tarragon
- Baccharis pilularis*, Coyote Brush
- Baccharis salicifolia*, Mule Fat
- \* *Carduus pycnocephalus*, Italian Thistle
- \* *Carduus tenuiflorus*, Slenderflower Thistle
- Centaurea melitensis*, Tocalote
- † *Centromadia parryi* ssp. *australis*, Southern Tarplant
- \* *Cirsium vulgare*, Bull Thistle
- Corethrogyne filaginifolia*, California Sand Aster
- \* *Cotula australis*, Australian Brassbuttons
- \* *Cynara cardunculus* ssp. *flavescens*, Artichoke Thistle
- Deinandra fasciculata*, Clustered Tarweed
- Encelia californica*, California Brittlebush
- \* *Erigeron bonariensis*, Argentine Fleabane
- Erigeron canadensis*, Canadian Horseweed
- \* *Erigeron sumatrensis*, Tropical Horseweed
- Eriophyllum confertiflorum*, Golden Yarrow
- \* *Glebionis coronaria*, Crown Daisy
- Grindelia camporum*, Great Valley Gumweed
- \* *Hedynois rhagadioloides*, Creteweed
- \* *Helianthus annuus*, Common Sunflower
- \* *Helminthotheca echioides*, Bristly Oxtongue
- Heterotheca grandiflora*, Telegraphweed
- Isocoma menziesii*, Coast Goldenbush
- \* *Lactuca serriola*, Prickly Wild Lettuce
- † *Lasthenia glabrata* ssp. *coulteri*, Coulter's Goldfields
- Lasthenia gracilis*, Common Goldfields
- Matricaria discoides*, Pineappleweed
- † *Microseris douglasii* ssp. *platycarpa*, Small-flowered Microseris
- \* *Oncosiphon pilulifer*, Stinknet
- Pluchea odorata*, Marsh Fleabane
- Pseudognaphalium californicum*, California Rabbit-Tobacco
- Psilocarphus brevissimus*, Low Woolly-Marbles
- \* *Silybum marianum*, Milk Thistle
- \* *Sonchus asper*, Prickly Sowthistle
- \* *Sonchus oleraceus*, Smooth Sowthistle
- Stephanomeria diegensis*, San Diego Wirelettuce
- \* *Taraxacum* sp., Dandelion species

#### Boraginaceae – Borage Family

- Amsinckia menziesii* ssp. *intermedia*, Common Fiddleneck
- Echium candicans*, Pride of Madeira
- Phacelia cicutaria*, Caterpillar Scorpionweed
- Phacelia distans*, Common Scorpionweed
- Phacelia ramosissima*, Branching Scorpionweed
- Phacelia tanacetifolia*, Lacy Scorpionweed
- Plagiobothrys acanthocarpus*, Adobe Popcornflower
- Plagiobothrys collinus*, Cooper's Popcornflower

#### Brassicaceae – Mustard Family

- \* *Brassica nigra*, Black Mustard
- \* *Hirschfeldia incana*, Shortpod Mustard
- \* *Lepidium didymum*, Lesser Swinecress
- \* *Lepidium draba*, Whitetop
- Lepidium nitidum*, Shining Pepperweed
- \* *Lepidium strictum*, Upright Pepperweed
- Planodes virginicum*, Virginia Cres
- \* *Raphanus sativus*, Garden Radish
- \* *Sisymbrium irio*, London Rocket
- \* *Sisymbrium orientale*, Oriental Mustard

#### Cactaceae – Cactus Family

- Cylindropuntia prolifera*, Coast Cholla
- Opuntia littoralis*, Coastal Prickly-pear

#### Caryophyllaceae – Pink Family

- \* *Polycarpon tetraphyllum*, Fourleaf Allseed
- \* *Silene gallica*, Windmill Pink
- \* *Spergularia villosa*, Hairy Sandspurrey

#### Chenopodiaceae – Goosefoot Family

- Atriplex lentiformis*, Big Saltbush
- \* *Atriplex semibaccata*, Berry Saltbush
- \* *Bassia hyssopifolia*, Five-horn Smotherweed
- \* *Beta vulgaris* ssp. *maritima*, Sea Beet
- \* *Chenopodium murale*, Nettleleaf Goosefoot
- \* *Chenopodium album*, Lamb's Quarter
- \* *Salsola australis*, Southern Russian Thistle

#### Cleomaceae – Spiderflower Family

- Cleomella arborea*, Bladderpod

#### Convolvulaceae – Morning-Glory Family

- Calystegia macrostegia*, Island Morning-Glory
- \* *Convolvulus arvensis*, Field Bindweed
- Cressa truxillensis*, Alkali Weed

#### Crassulaceae – Stonecrop Family

- Crassula aquatica*, Water Pygmyweed
- Crassula connata*, Sand Pygmyweed

#### Cucurbitaceae – Gourd Family

- Cucurbita foetidissima*, Buffalo Gourd
- Marah macrocarpa*, Chilicothe

#### Elatinaceae – Waterwort Family

- Elatine brachysperma*, California Waterwort
- Elatine californica*, California Waterwort

#### Euphorbiaceae – Spurge Family

- Croton californicus*, California Croton
- Croton setiger*, Turkey Mullein
- \* *Ricinus communis*, Castor Bean

#### Fabaceae – Pea Family

- \* *Lupinus albifrons*, Silver Bush Lupine
- \* *Medicago polymorpha*, Burclover
- \* *Melilotus indicus*, Annual Sweetclover
- Trifolium depauperatum*, Cowbag Clover
- \* *Trifolium fragiferum*, Strawberry Clover
- \* *Trifolium repens*, White Clover

#### Frankeniaceae – Seaheath Family

- Frankenia salina*, Alkali Seaheath

#### Geraniaceae – Geranium Family

- \* *Erodium botrys*, Longbeak Filaree
- \* *Erodium brachycarpum*, Shortbeak Filaree
- \* *Erodium cicutarium*, Redstem Filaree
- \* *Erodium moschatum*, Musk Filaree

#### Heliotropiaceae – Heliotrope Family

- Heliotropium curassavicum*, Seaside Heliotrope

#### Juglandaceae – Walnut Family


- Juglans californica*, Southern Californian Walnut

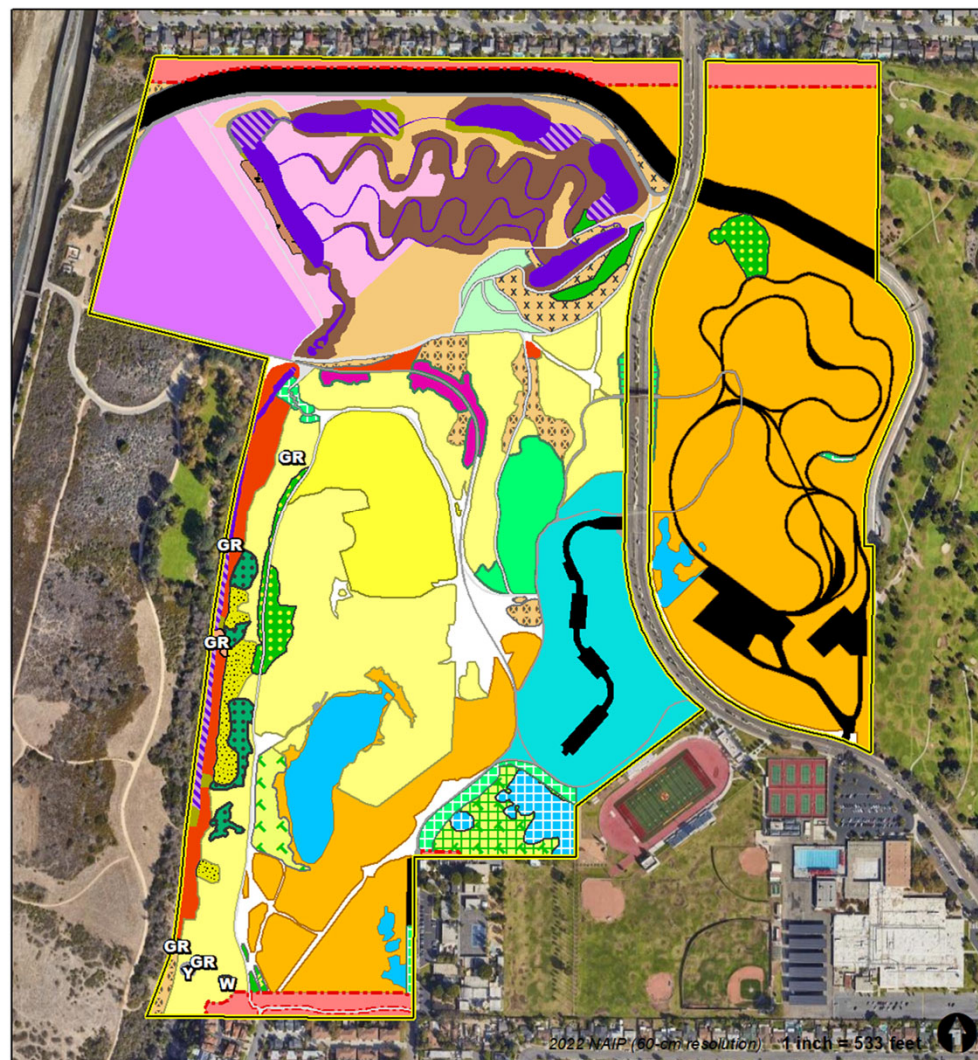
#### Juncaceae – Rush Family



## Vegetation Map

**Map Code | 2023 Vegetation Map Unit Common Name**

	1720   Black Willow – Red Willow Riparian Woodland and Forest		4210   Wild Oats and Annual Brome Grasslands
	1740   Fremont Cottonwood – Red Willow		4250   Upland Black Mustard and Tocalote Fields
	1810   Mulefat Thickets		4255   Upland Shortpod Mustard and Tocalote Fields
	1820   Arroyo Willow Thickets		4270   Poison Hemlock or Fennel Patches
	1830   Southern California Walnut Groves (W)		4310   Fiddleneck – Phacelia Fields
	1840   Sandbar Willow Thickets		6135   California Bulrush – Cattail Marsh
	1845   Sandbar Willow – Blue Elderberry Thicket (Habitat Creation Project)		6500   Clustered Tarplant Fields
	1910   Giant Reed (GR)		6550   Clustered Tarplant Fields (Restoration)
	2310   Coyote Brush Scrub		6600   Pale Spike Rush Vernal Pool Bottoms
	2315   Coyote Brush Scrub (Disturbed)		6650   Pale Spike Rush Vernal Pool Bottoms (Restoration Area)
	3110   California Sagebrush Scrub		8120   Coast Prickly Pear Scrub
	3120   California Sagebrush – California Buckwheat Scrub		9100   Introduced Trees (Y)
	3125   California Sagebrush – California Buckwheat Scrub (Restoration Area)		9150   Irrigated Lawn and Ornamental Landscaping Trees
	3145   California Sunflower Bush – Ashy Buckwheat Scrub (Disturbed)		9300   Urban/Disturbed
	3150   California Buckwheat Scrub		9310   Urban-Sidewalk/Bridge/Trail
	3195   Purple Sage Scrub (Introduced Vegetation Community/Restoration Area)		9315   Natural Soil or Decomposed Granite (DG) Trail
	3330   Coast Goldenbush Scrub		9320   Fuel Modification Zone
	3335   Coast Goldenbush Scrub (Disturbed)		9330   Anthropogenic Areas of Little or No
			9800   Water Body
			9810   Rip-rap/Concrete Pond Liner
	Fairview Park Boundary		







# Restoration Opportunities

## Map Code | Habitat Restoration Targets (Common Veg Name)

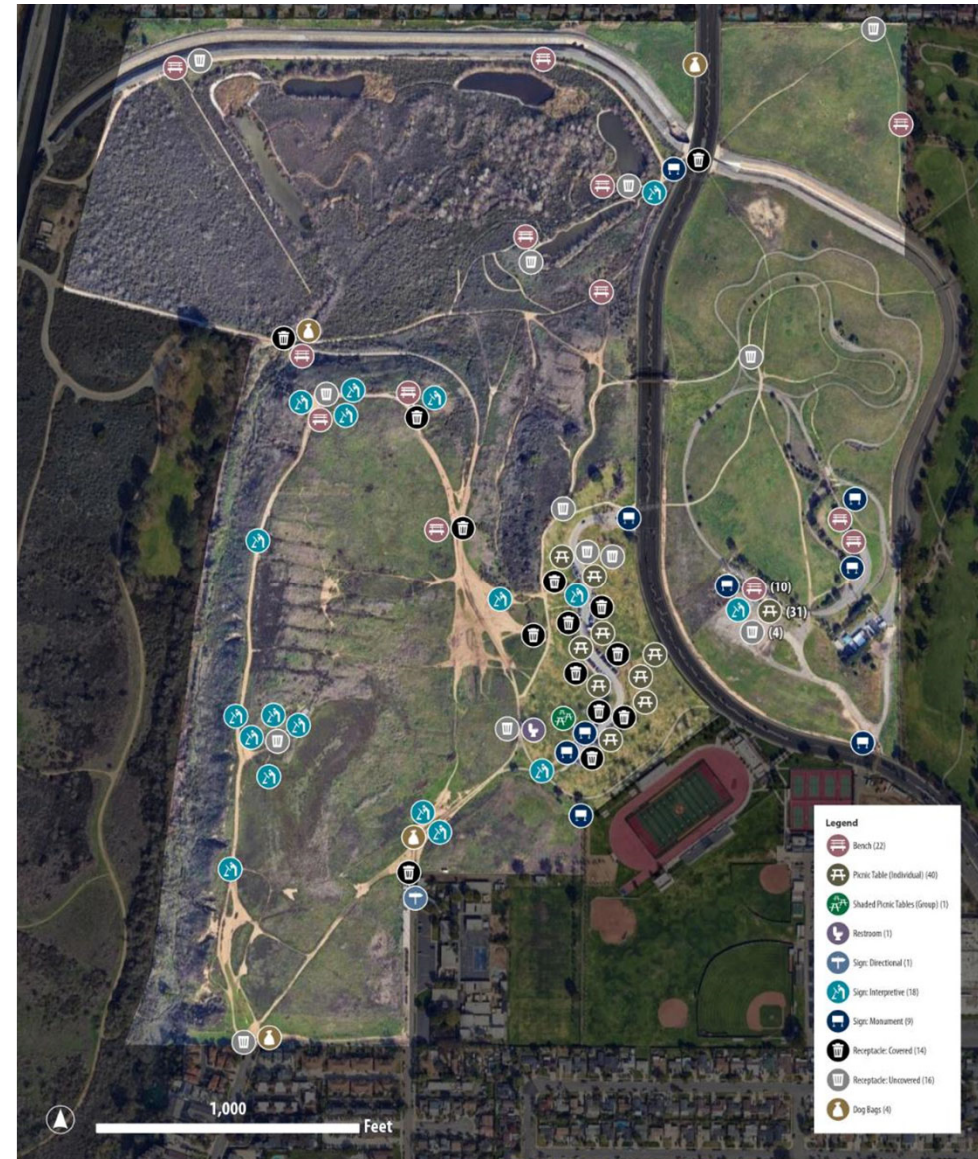
-  1810 | Mulefat Thickets
-  1830 | Southern California Walnut Groves (W)
-  3120 | California Sagebrush – California Buckwheat Scrub
-  3140 | California Sunflower Bush – Ashy Buckwheat Scrub
-  3190 | California Sagebrush – Coast Prickly Pear Scrub
-  3210 | Black Sage Scrub
-  4310 | Fiddleneck – Phacelia Fields
-  6500 | Clustered Tarplant Fields

-  Fairview Park Boundary
-  Improper Fill Material (Extent in 2023)

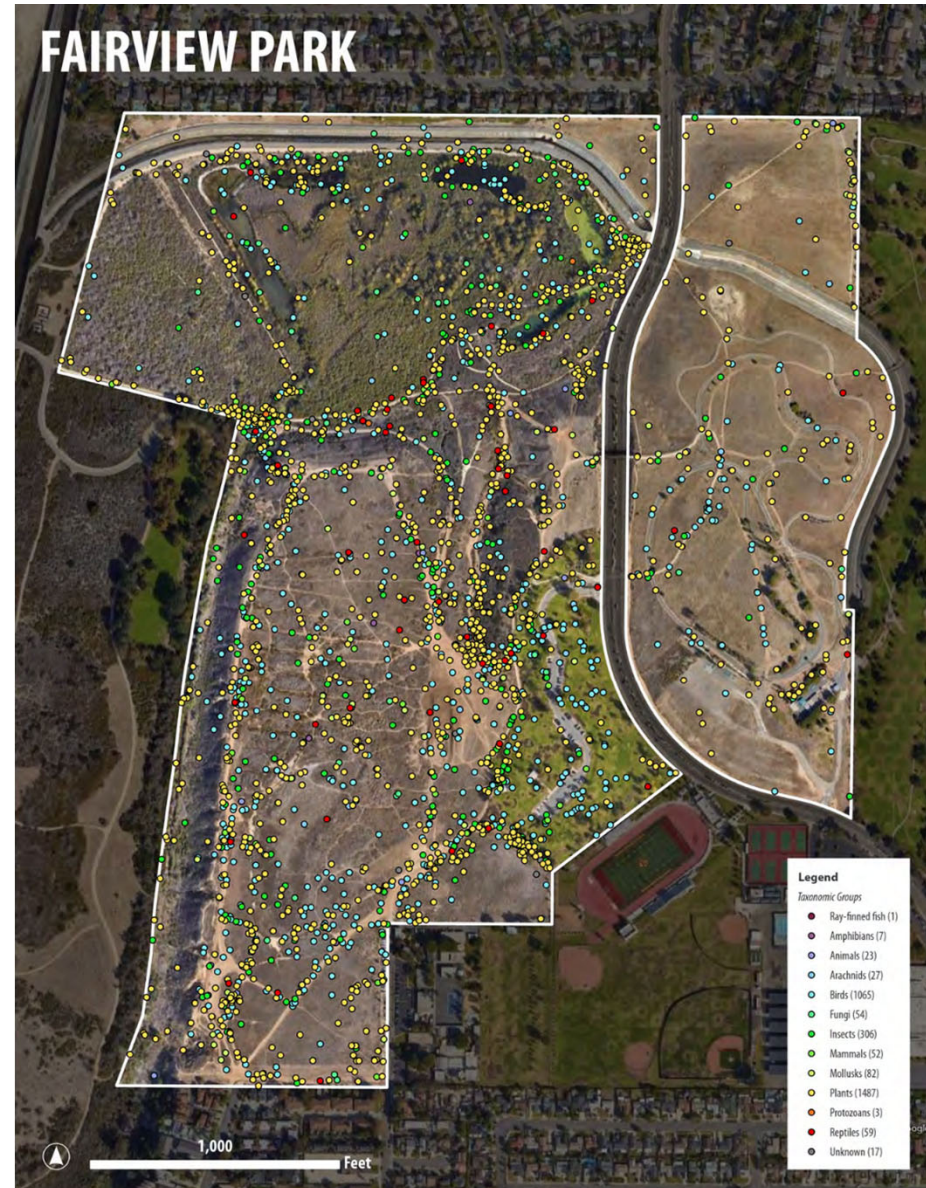




# Amenity Inventory

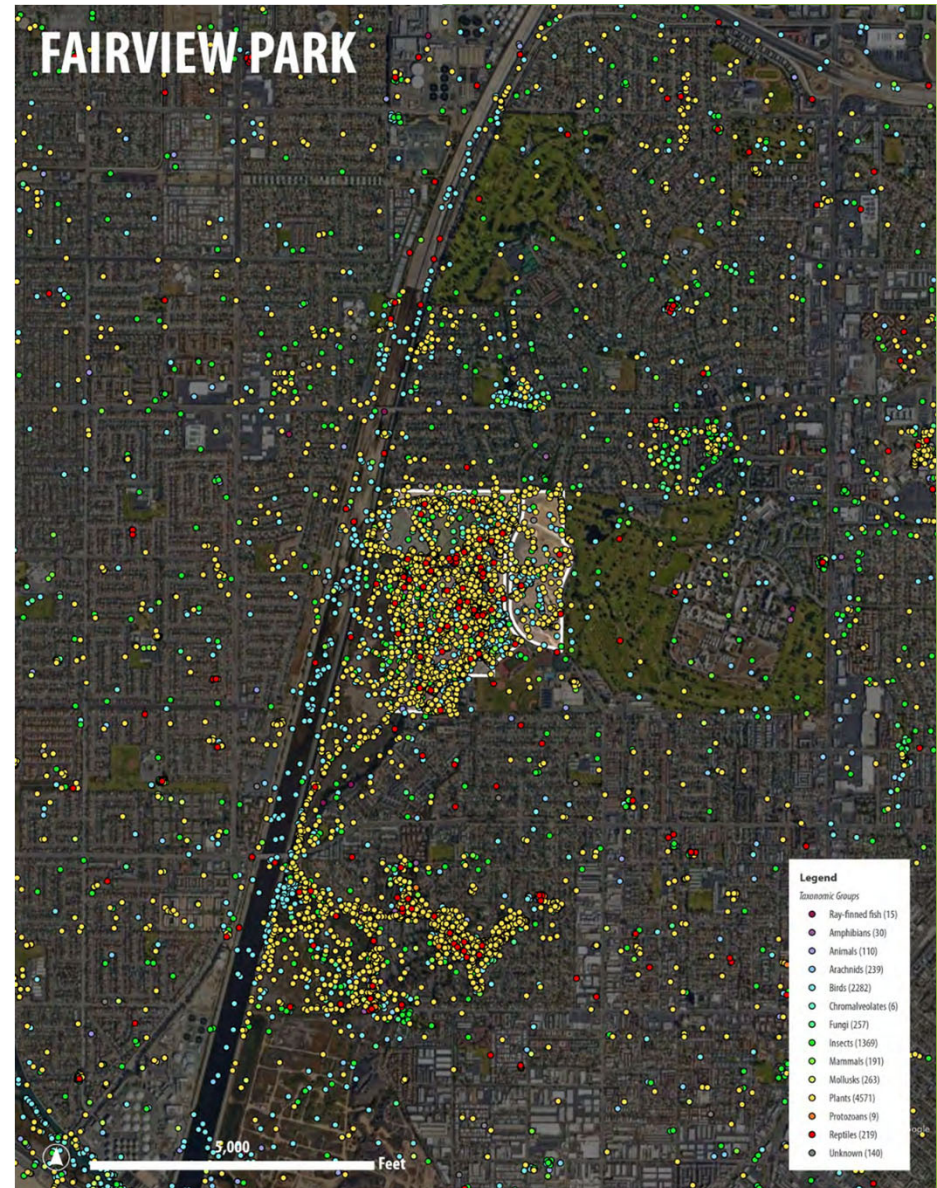


# *iNaturalist Observations At Fairview Park*





*Fairview  
Park is a  
Regional  
Biodiversity  
Hotspot*





# COMMUNITY FEEDBACK



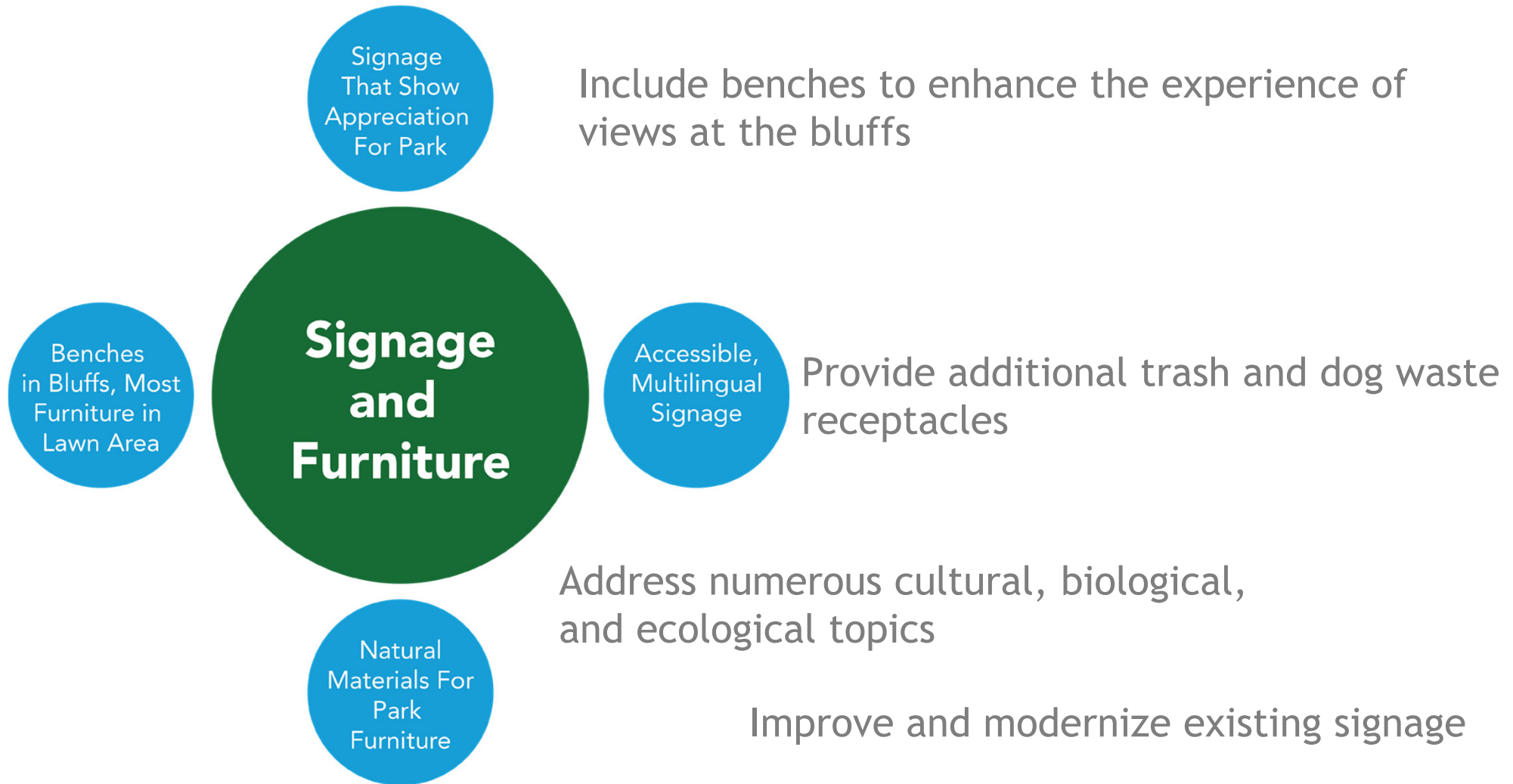


Remove excess trails on the mesa

Ensure regular maintenance of trails



Wide trail for loop, narrow for others

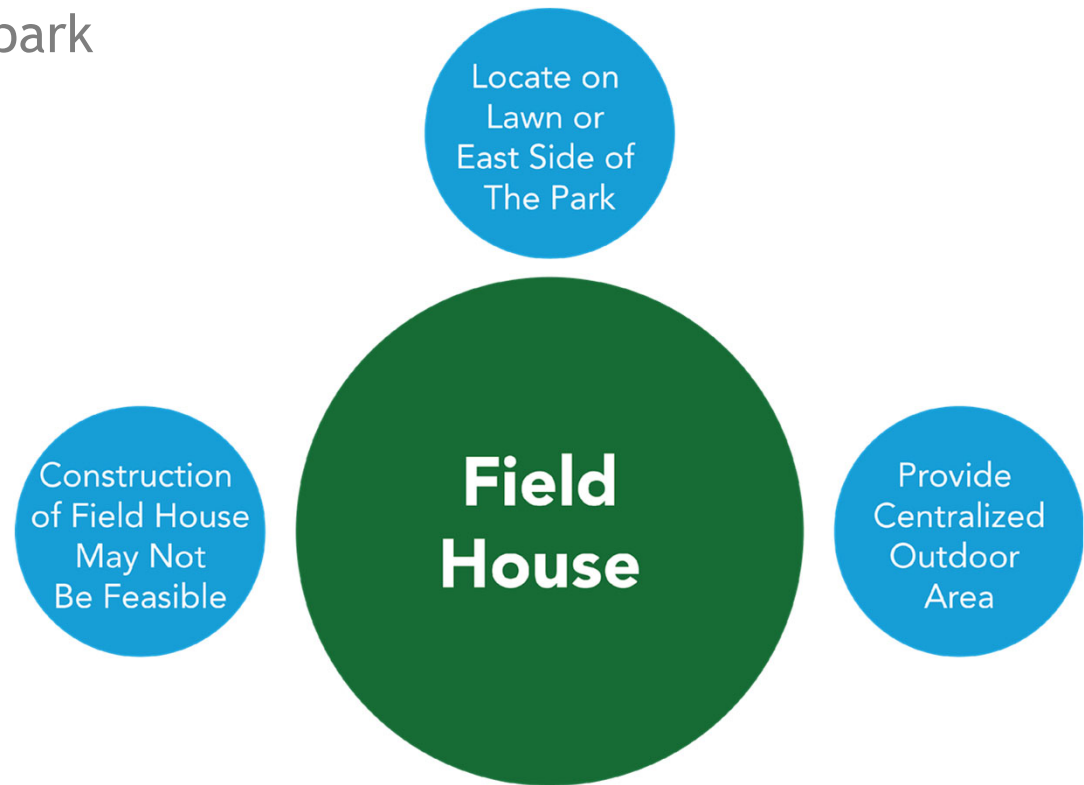






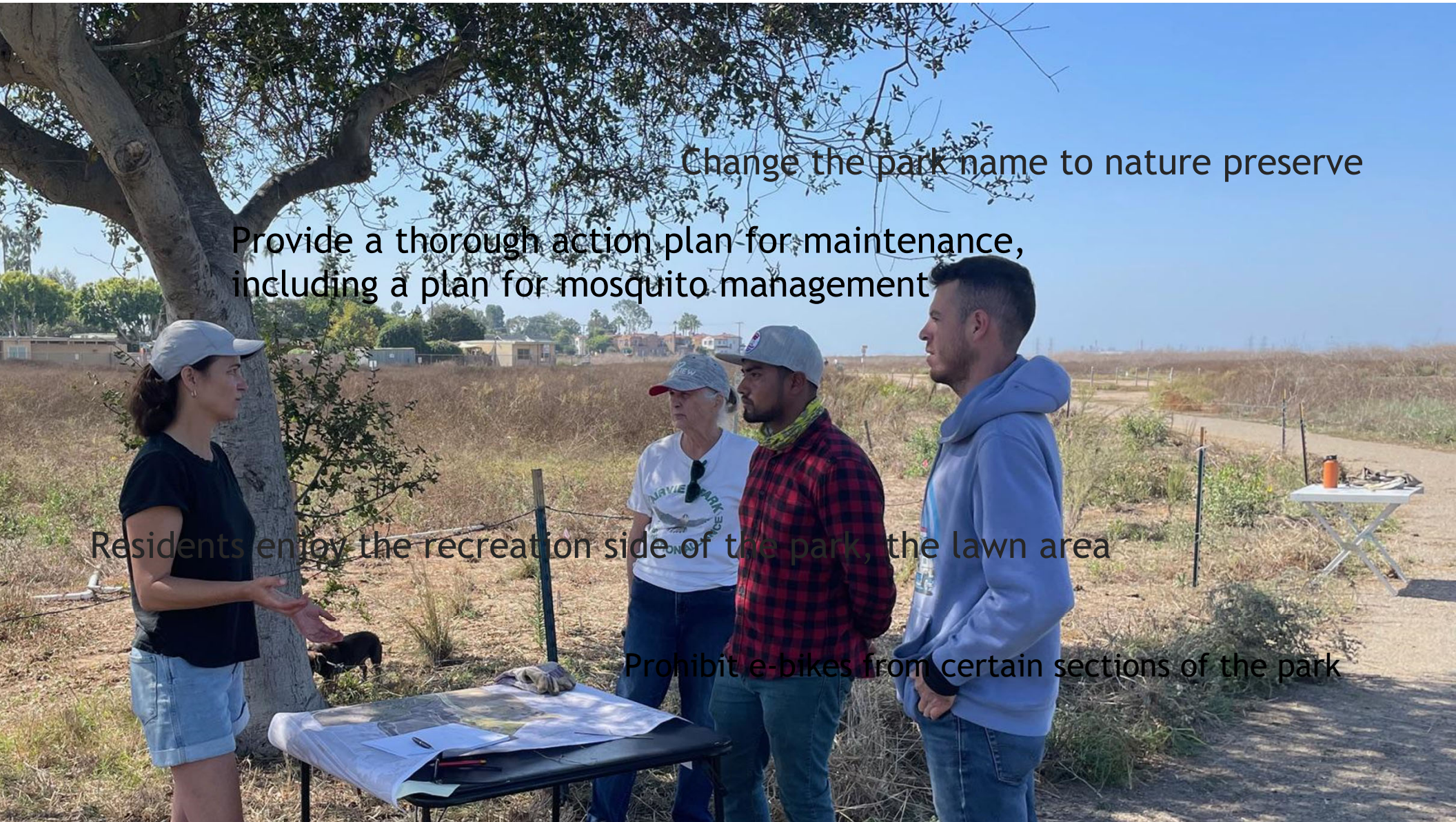
Legitimize nature focus of park

Provide staff at facility



Provide various programs to field house





Change the park name to nature preserve

Provide a thorough action plan for maintenance,  
including a plan for mosquito management

Residents enjoy the recreation side of the park, the lawn area

Prohibit e-bikes from certain sections of the park



# Presentation of Draft Recommendations





# Habitat Restoration Opportunities



# Regionally Significant Ecological & Cultural Site



Least Bell's Vireo

*Photo Credit: Robb Hamilton*



## Cultural & Historical Resources

- Indigenous Village Site, Genga
- Nationally Registered Cultural Resource Historic Sites

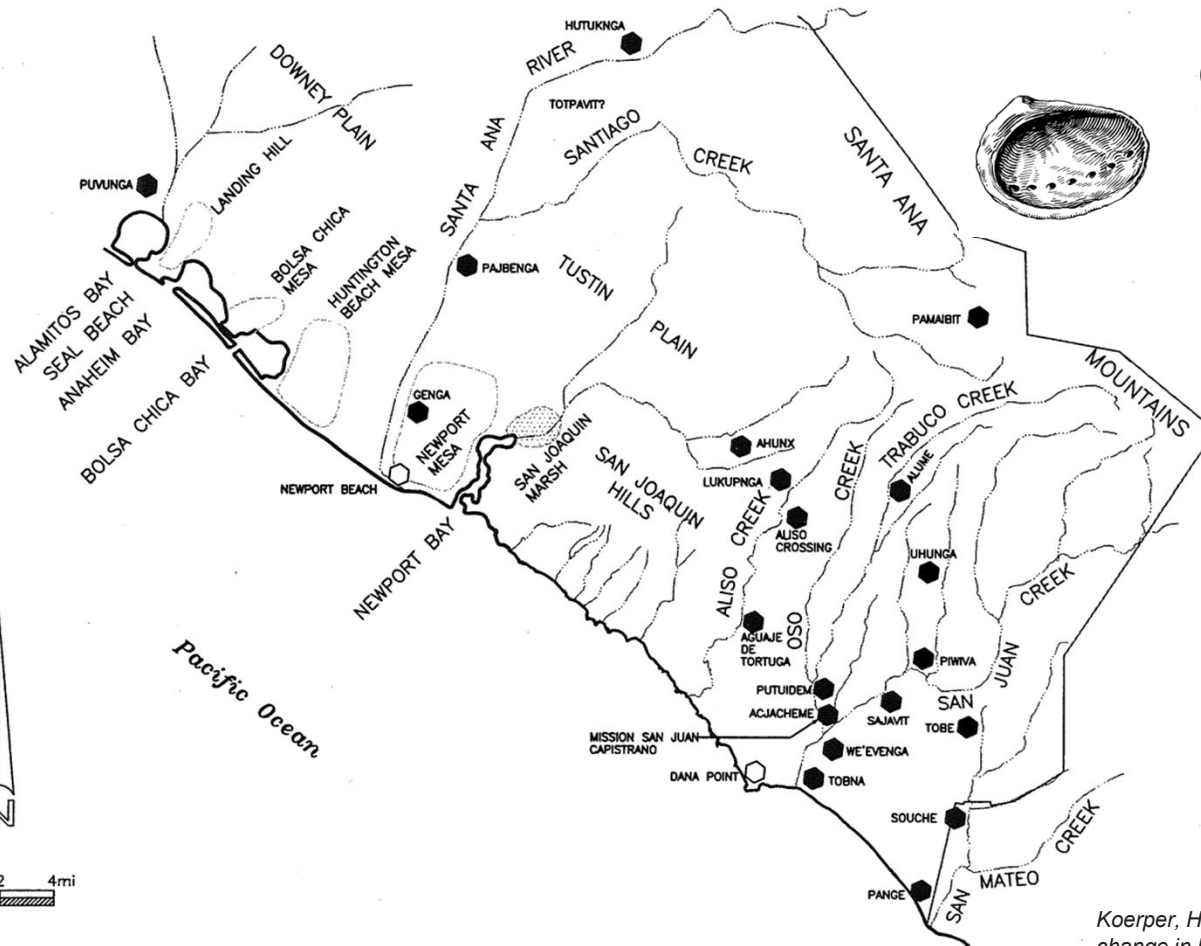
## Biodiversity Hotspot





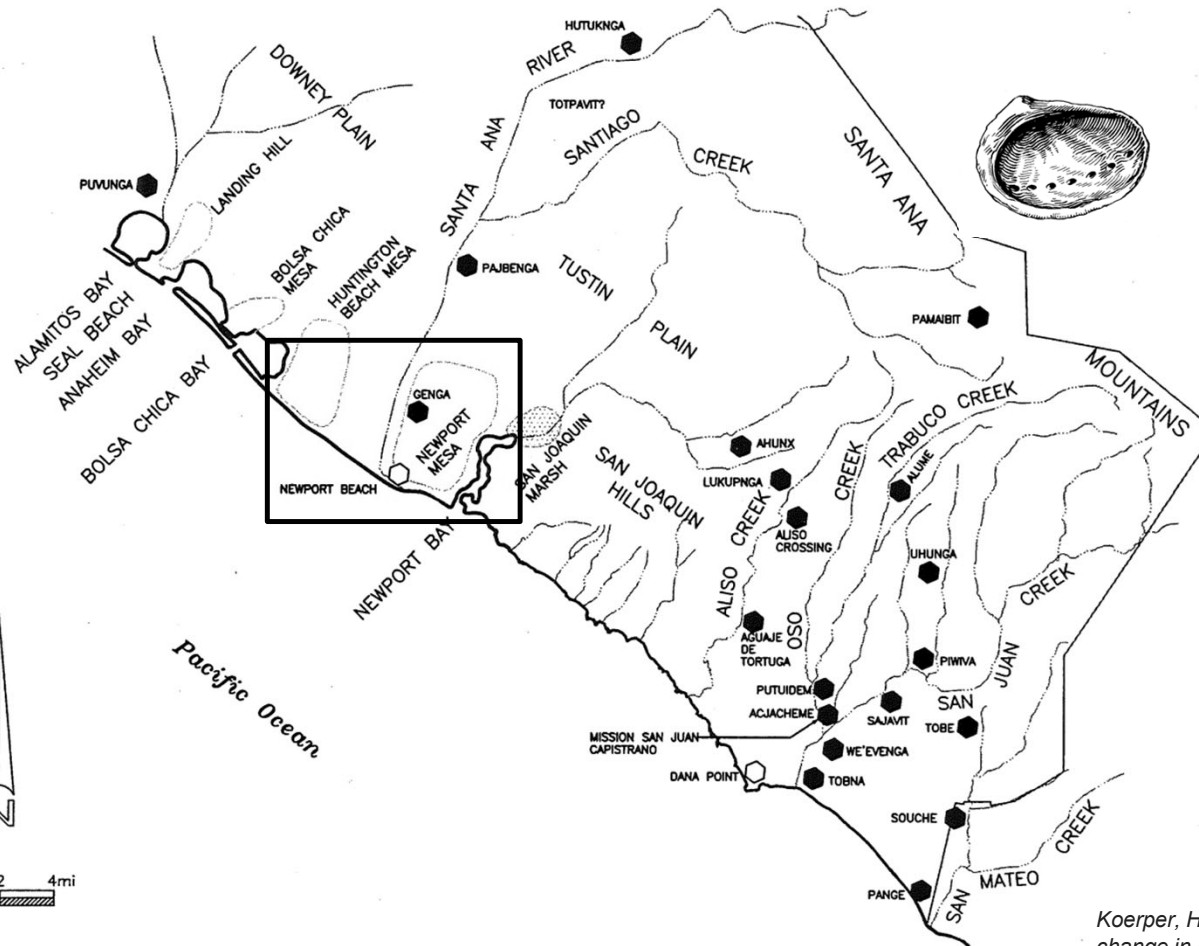
# Regionally Significant Ecological & Cultural Site

## Cultural & Historical Resources



Koerper, H. C., Mason, R. D., & Peterson, M. L. 1994. Complexity, demography, and change in Late Holocene orange county. *ENVIRONMENT*, 77.

# Regionally Significant Ecological & Cultural Site



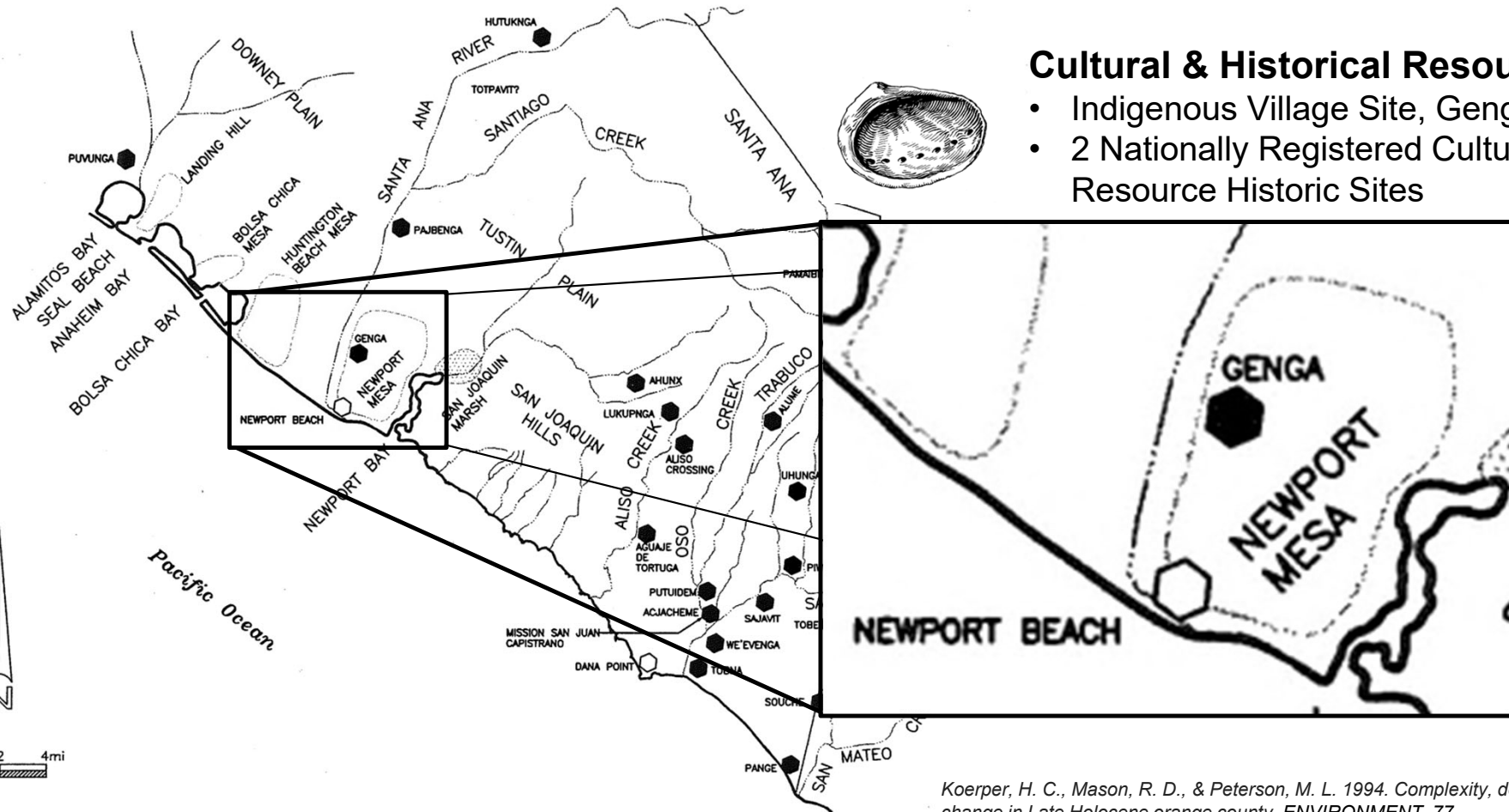
## Cultural & Historical Resources

- Indigenous Village Site, Genga
- 2 Nationally Registered Cultural Resource Historic Sites

Koerper, H. C., Mason, R. D., & Peterson, M. L. 1994. Complexity, demography, and change in Late Holocene orange county. *ENVIRONMENT*, 77.



# Regionally Significant Ecological & Cultural Site



## Cultural & Historical Resources

- Indigenous Village Site, Genga
- 2 Nationally Registered Cultural Resource Historic Sites

Koerper, H. C., Mason, R. D., & Peterson, M. L. 1994. Complexity, demography, and change in Late Holocene orange county. *ENVIRONMENT*, 77.

# Regionally Significant Ecological & Cultural Site



Least Bell's Vireo

*Photo Credit: Robb Hamilton*



## Cultural & Historical Resources

- Indigenous Village Site, Genga
- 2 Nationally Registered Cultural Resource Historic Sites

## Biodiversity Hotspot





# Regionally Significant Ecological & Cultural Site



Coastal California Gnatcatcher

*Photo Credit: Robb Hamilton*



## Cultural & Historical Resources

- Indigenous Village Site, Genga
- 2 Nationally Registered Cultural Resource Historic Sites



## Biodiversity Hotspot

- 197 Plant Species
- 10 Rare Plant Species
- 18 Vegetation Community Alliances
- Habitat for Protected Species, including Least Bell's Vireo, Coastal California Gnatcatcher, & Crotch's Bumblebee
- 20 Butterfly Species
- 220 Species of Birds
- Wildlife Corridor

# Regionally Significant Ecological & Cultural Site



Vernal Pool Habitat on the Mesa

*Photo Credit: City of Costa Mesa*



## Cultural & Historical Resources

- Indigenous Village Site, Genga
- 2 Nationally Registered Cultural Resource Historic Sites



## Biodiversity Hotspot

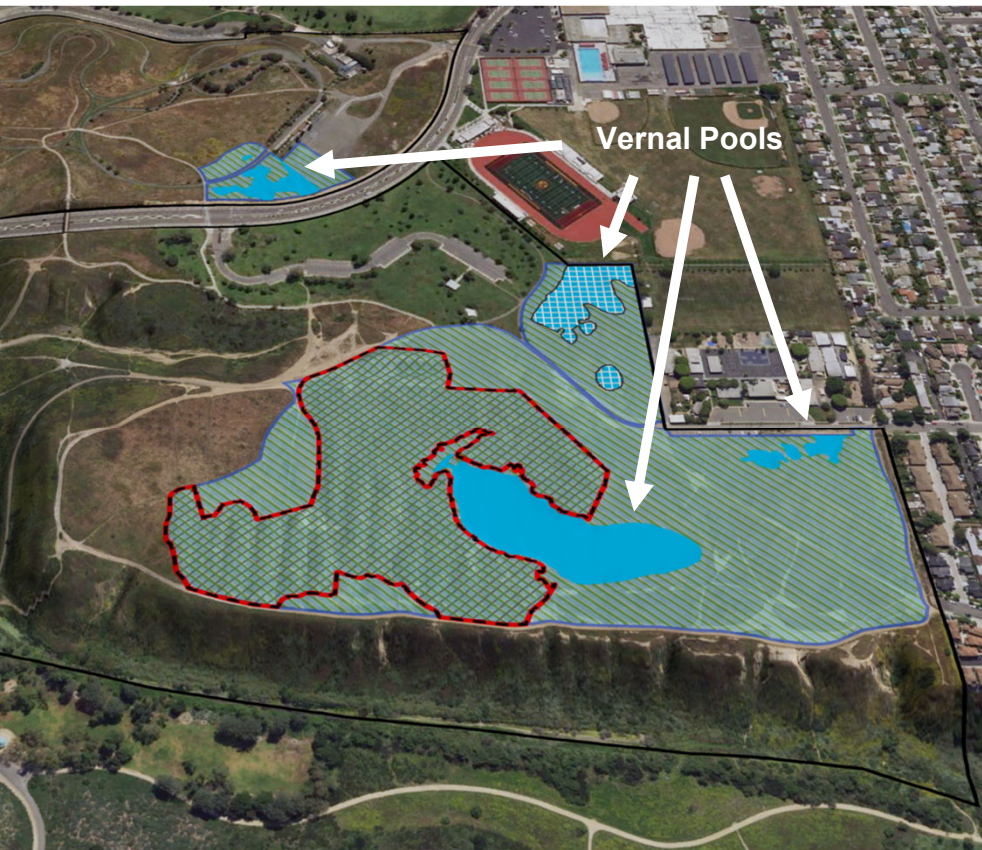
- 197 Plant Species
- 10 Rare Plant Species
- 18 Vegetation Community Alliances
- Habitat for Protected Species, including Least Bell's Vireo, Coastal California Gnatcatcher, & Crotch's Bumblebee
- 20 Butterfly Species
- 220 Species of Birds
- Wildlife Corridor



## Vernal Pools



# Regionally Significant Ecological & Cultural Site



## Cultural & Historical Resources

- Indigenous Village Site, Genga
- 2 Nationally Registered Cultural Resource Historic Sites



## Biodiversity Hotspot

- 197 Plant Species
- 10 Rare Plant Species
- 18 Vegetation Community Alliances
- Habitat for Protected Species, including Least Bell's Vireo, Coastal California Gnatcatcher, & Crotch's Bumblebee
- 20 Butterfly Species
- 220 Species of Birds
- Wildlife Corridor



## Vernal Pools

- Federally Protected Vernal Pool Habitat for San Diego and Riverside Fairy Shrimp
- 8 Special Status Vernal Pool Plants

# Regionally Significant Ecological & Cultural Site



## Cultural & Historical Resources

- Indigenous Village Site, Genga
- 2 Nationally Registered Cultural Resource Historic Sites



## Biodiversity Hotspot

- 197 Plant Species
- 10 Rare Plant Species
- 18 Vegetation Community Alliances
- Habitat for Protected Species, including Least Bell's Vireo, Coastal California Gnatcatcher, & Crotch's Bumblebee
- 20 Butterfly Species
- 220 Species of Birds
- Wildlife Corridor

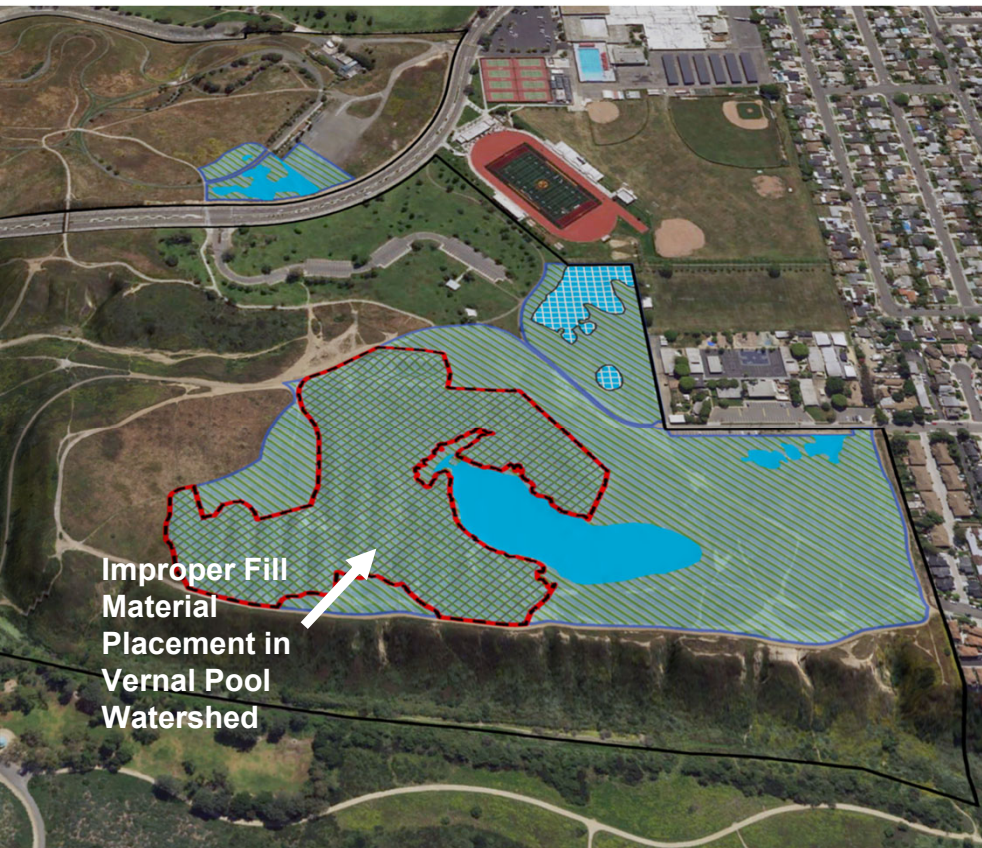


## Vernal Pools

- Federally Protected Vernal Pool Habitat for San Diego and Riverside Fairy Shrimp
- 8 Special Status Vernal Pool Plants



# Regionally Significant Ecological & Cultural Site



## Cultural & Historical Resources

- Indigenous Village Site, Genga
- 2 Nationally Registered Cultural Resource Historic Sites



## Biodiversity Hotspot

- 197 Plant Species
- 10 Rare Plant Species
- 18 Vegetation Community Alliances
- Habitat for Protected Species, including Least Bell's Vireo, Coastal California Gnatcatcher, & Crotch's Bumblebee
- 20 Butterfly Species
- 220 Species of Birds
- Wildlife Corridor



## Vernal Pools

- Federally Protected Vernal Pool Habitat for San Diego and Riverside Fairy Shrimp
- 8 Special Status Vernal Pool Plants





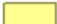













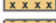

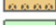



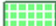





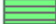



# Regionally Significant Ecological & Cultural Site

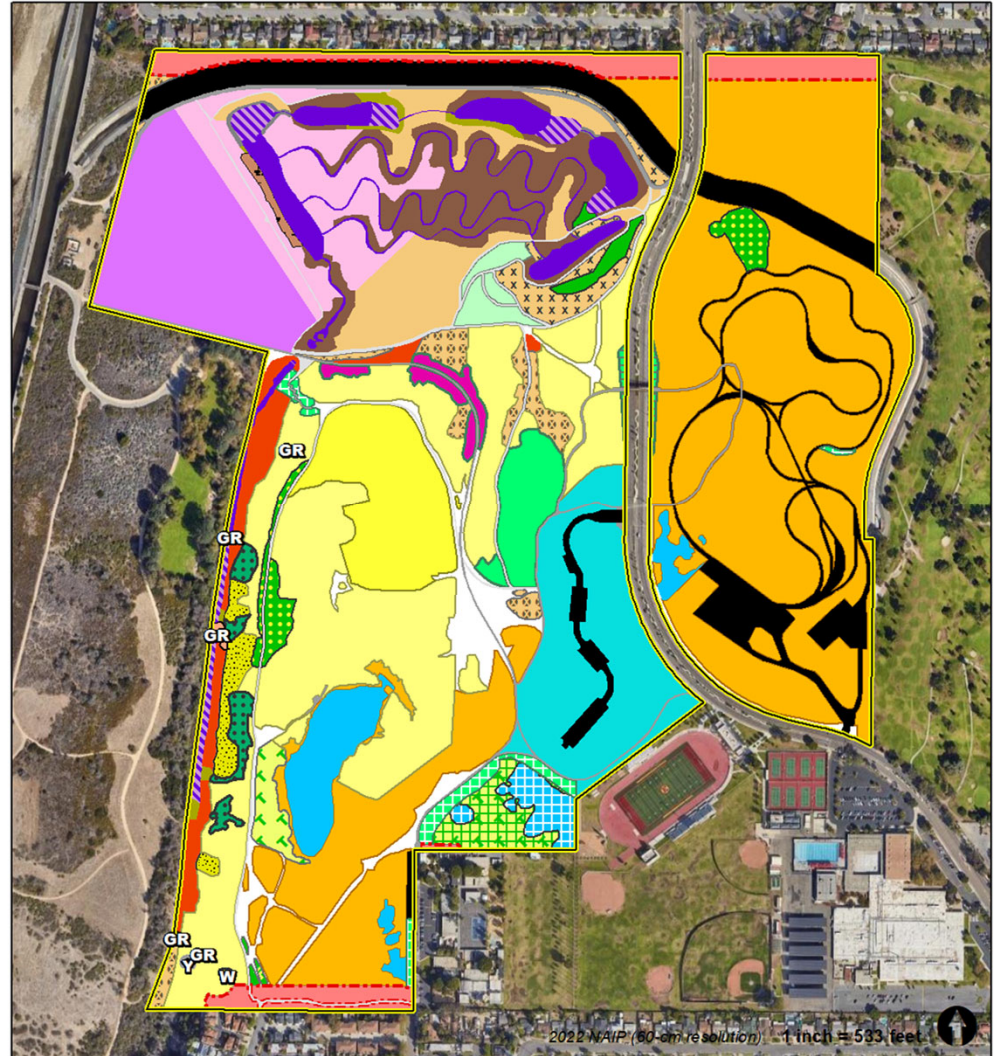




# 2023 Vegetation Map

**Map Code | 2023 Vegetation Map Unit Common Name**

	1720   Black Willow - Red Willow Riparian Woodland and Forest		4210   Wild Oats and Annual Brome Grasslands
	1740   Fremont Cottonwood – Red Willow		4250   Upland Black Mustard and Tocalote Fields
	1810   Mulefat Thickets		4255   Upland Shortpod Mustard and Tocalote Fields
	1820   Arroyo Willow Thickets		4270   Poison Hemlock or Fennel Patches
	1830   Southern California Walnut Groves (W)		4310   Fiddleneck – Phacelia Fields
	1840   Sandbar Willow Thickets		6135   California Bulrush – Cattail Marsh
	1845   Sandbar Willow – Blue Elderberry Thicket (Habitat Creation Project)		6500   Clustered Tarplant Fields
	1910   Giant Reed (GR)		6550   Clustered Tarplant Fields (Restoration)
	2310   Coyote Brush Scrub		6600   Pale Spike Rush Vernal Pool Bottoms
	2315   Coyote Brush Scrub (Disturbed)		6650   Pale Spike Rush Vernal Pool Bottoms (Restoration Area)
	3110   California Sagebrush Scrub		8120   Coast Prickly Pear Scrub
	3120   California Sagebrush – California Buckwheat Scrub		9100   Introduced Trees (Y)
	3125   California Sagebrush – California Buckwheat Scrub (Restoration Area)		9150   Irrigated Lawn and Ornamental Landscaping Trees
	3145   California Sunflower Bush – Ashy Buckwheat Scrub (Disturbed)		9300   Urban/Disturbed
	3150   California Buckwheat Scrub		9310   Urban-Sidewalk/Bridge/Trail
	3195   Purple Sage Scrub (Introduced Vegetation Community/Restoration Area)		9315   Natural Soil or Decomposed Granite (DG) Trail
	3330   Coast Goldenbush Scrub		9320   Fuel Modification Zone
	3335   Coast Goldenbush Scrub (Disturbed)		9330   Anthropogenic Areas of Little or No
	Fairview Park Boundary		9800   Water Body
			9810   Rip-rap/Concrete Pond Liner

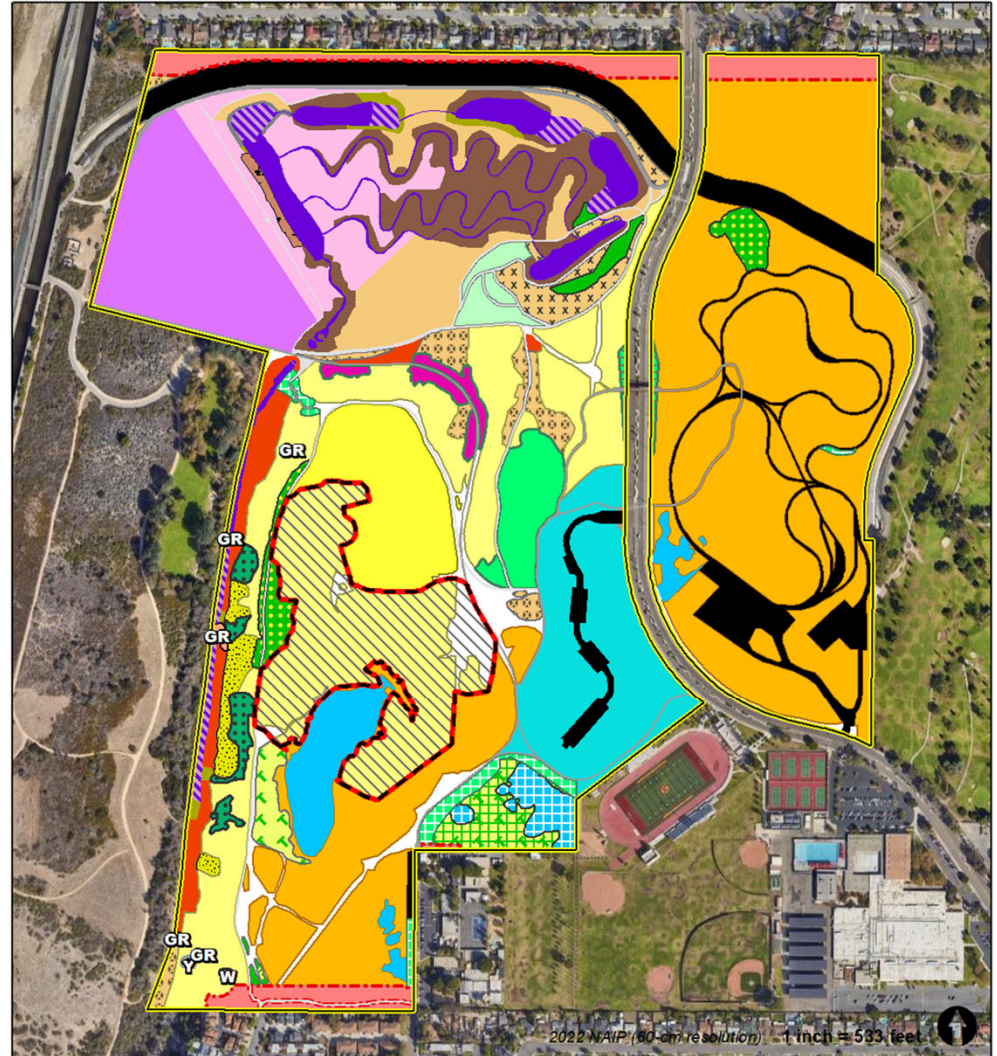




# 2023 Vegetation Map

## Map Code | 2023 Vegetation Map Unit Common Name

1720   Black Willow - Red Willow Riparian Woodland and Forest	4210   Wild Oats and Annual Brome Grasslands
1740   Fremont Cottonwood - Red Willow	4250   Upland Black Mustard and Tocalote Fields
1810   Mulefat Thickets	4255   Upland Shortpod Mustard and Tocalote Fields
1820   Arroyo Willow Thickets	4270   Poison Hemlock or Fennel Patches
1830   Southern California Walnut Groves (W)	4310   Fiddleneck - Phacelia Fields
1840   Sandbar Willow Thickets	6135   California Bulrush - Cattail Marsh
1845   Sandbar Willow - Blue Elderberry Thicket (Habitat Creation Project)	6500   Clustered Tarplant Fields
1910   Giant Reed (GR)	6550   Clustered Tarplant Fields (Restoration)
2310   Coyote Brush Scrub	6600   Pale Spike Rush Vernal Pool Bottoms
2315   Coyote Brush Scrub (Disturbed)	6650   Pale Spike Rush Vernal Pool Bottoms (Restoration Area)
3110   California Sagebrush Scrub	8120   Coast Prickly Pear Scrub
3120   California Sagebrush - California Buckwheat Scrub	9100   Introduced Trees (Y)
3125   California Sagebrush - California Buckwheat Scrub (Restoration Area)	9150   Irrigated Lawn and Ornamental Landscaping Trees
3145   California Sunflower Bush - Ashy Buckwheat Scrub (Disturbed)	9300   Urban/Disturbed
3150   California Buckwheat Scrub	9310   Urban-Sidewalk/Bridge/Trail
3195   Purple Sage Scrub (Introduced Vegetation Community/Restoration Area)	9315   Natural Soil or Decomposed Granite (DG) Trail
3330   Coast Goldenbush Scrub	9320   Fuel Modification Zone
3335   Coast Goldenbush Scrub (Disturbed)	9330   Anthropogenic Areas of Little or No
	9800   Water Body
	9810   Rip-rap/Concrete Pond Liner
Yellow outline   Fairview Park Boundary	
Red outline   Improper Fill Material (Extent in 2023)	

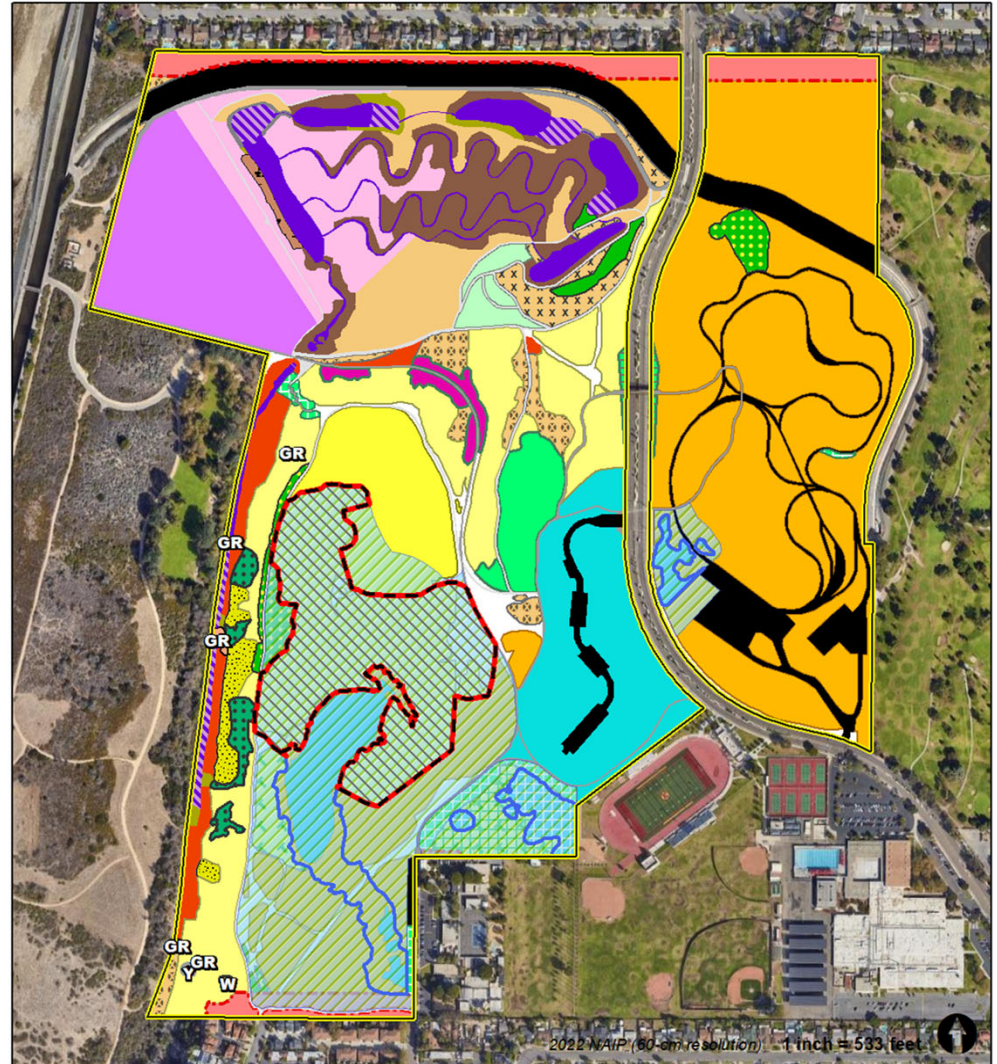




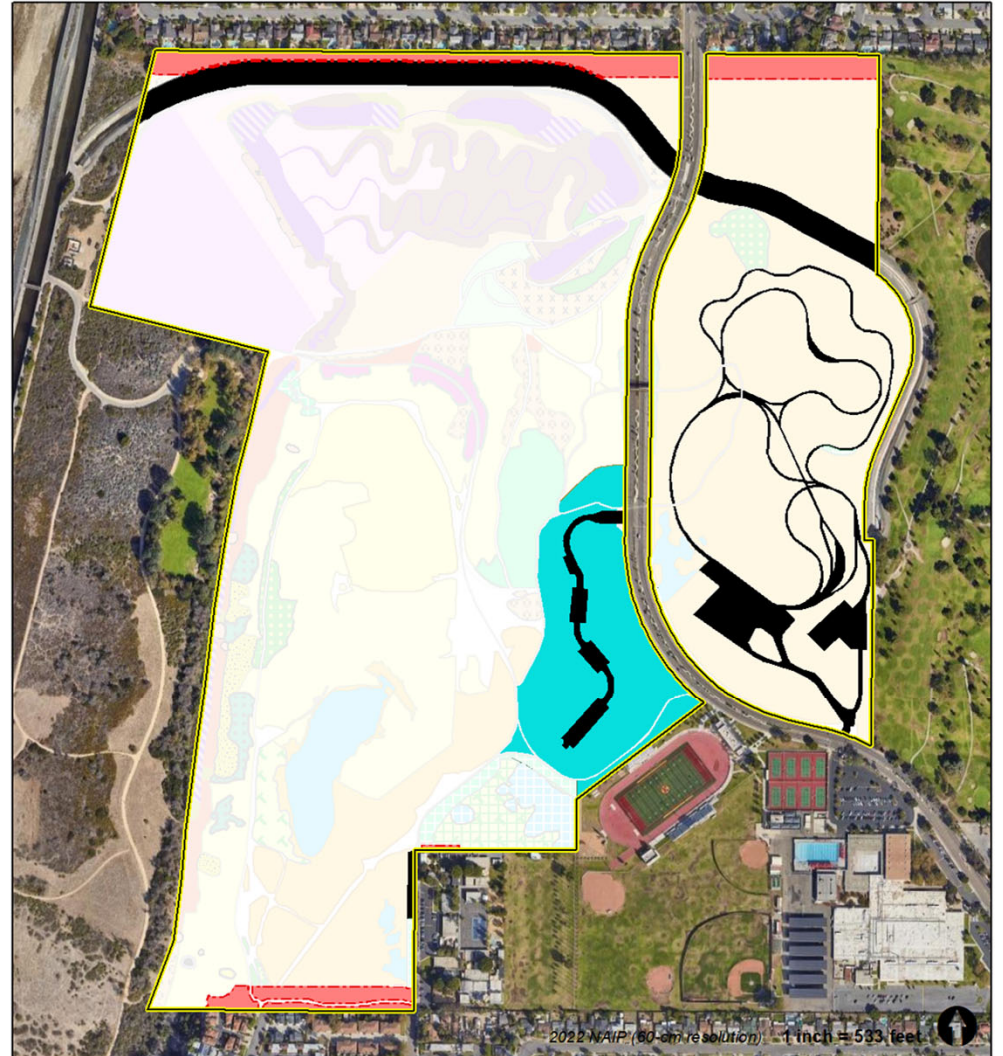
# 2023 Vegetation Map

## Map Code | 2023 Vegetation Map Unit Common Name

1720   Black Willow - Red Willow Riparian Woodland and Forest	4210   Wild Oats and Annual Brome Grasslands
1740   Fremont Cottonwood - Red Willow	4250   Upland Black Mustard and Tocalote Fields
1810   Mulefat Thickets	4255   Upland Shortpod Mustard and Tocalote Fields
1820   Arroyo Willow Thickets	4270   Poison Hemlock or Fennel Patches
1830   Southern California Walnut Groves (W)	4310   Fiddleneck - Phacelia Fields
1840   Sandbar Willow Thickets	6135   California Bulrush - Cattail Marsh
1845   Sandbar Willow - Blue Elderberry Thicket (Habitat Creation Project)	6500   Clustered Tarplant Fields
1910   Giant Reed (GR)	6550   Clustered Tarplant Fields (Restoration)
2310   Coyote Brush Scrub	6600   Pale Spike Rush Vernal Pool Bottoms
2315   Coyote Brush Scrub (Disturbed)	6650   Pale Spike Rush Vernal Pool Bottoms (Restoration Area)
3110   California Sagebrush Scrub	8120   Coast Prickly Pear Scrub
3120   California Sagebrush - California Buckwheat Scrub	9100   Introduced Trees (Y)
3125   California Sagebrush - California Buckwheat Scrub (Restoration Area)	9150   Irrigated Lawn and Ornamental Landscaping Trees
3145   California Sunflower Bush - Ashy Buckwheat Scrub (Disturbed)	9300   Urban/Disturbed
3150   California Buckwheat Scrub	9310   Urban-Sidewalk/Bridge/Trail
3195   Purple Sage Scrub (Introduced Vegetation Community/Restoration Area)	9315   Natural Soil or Decomposed Granite (DG) Trail
3330   Coast Goldenbush Scrub	9320   Fuel Modification Zone
3335   Coast Goldenbush Scrub (Disturbed)	9330   Anthropogenic Areas of Little or No
	9800   Water Body
	9810   Rip-rap/Concrete Pond Liner
Fairview Park Boundary	
Improper Fill Material (Extent in 2023)	
Vernal Pool High Estimated High Flood Mark	
Vernal Pool Watershed (Remaining, Undeveloped Extent)	



**Developed or  
Manicured Lawn  
(13 acres, 6.3%)**





<p><b>Existing Habitat Restoration</b> (31.9 acres, 15.3%)</p>	<p><b>On-Going Habitat Restoration Projects</b> (19.67 acres, 9.5%)</p>	<p><b>Developed or Manicured Lawn</b> (13 acres, 6.3%)</p>
--	---	--





**Habitat Restoration Opportunities**  
(80.17 acres, 38.5%)

**Existing Habitat  
Restoration**  
(31.9 acres, 15.3%)

**On-Going  
Habitat  
Restoration  
Projects**  
(19.67 acres,  
9.5%)

**Developed or  
Manicured Lawn**  
(13 acres, 6.3%)





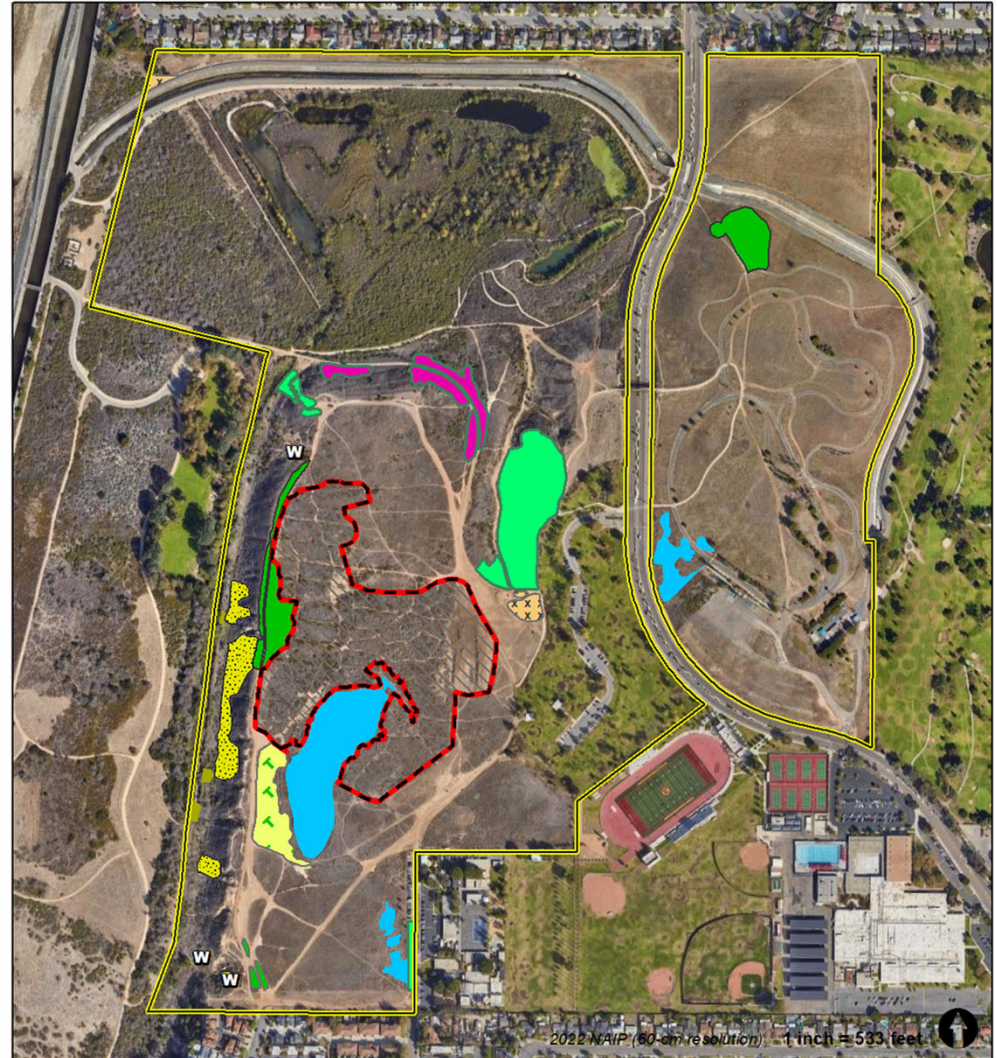
**Habitat Restoration Opportunities**  
(80.17 acres, 38.5%)

**Existing Habitat  
Restoration**  
(31.9 acres, 15.3%)

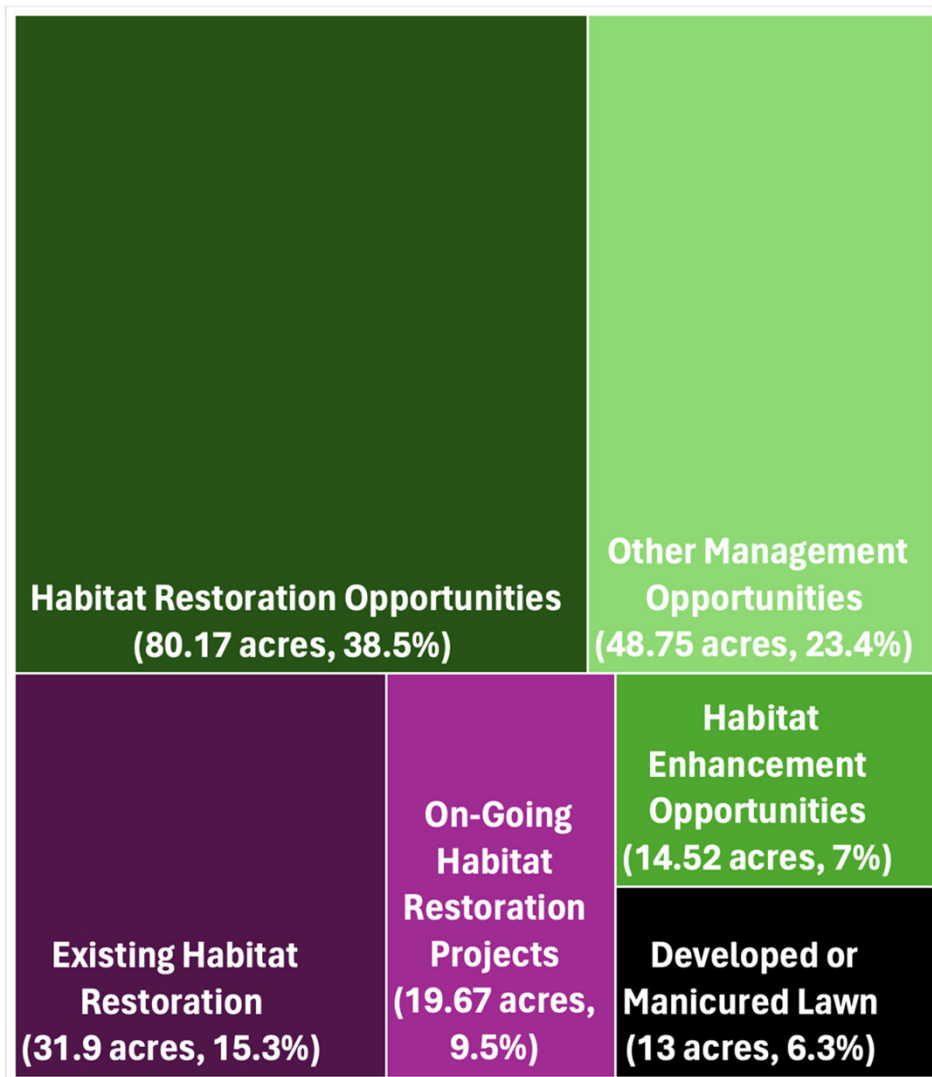
**On-Going  
Habitat  
Restoration  
Projects**  
(19.67 acres,  
9.5%)

**Habitat  
Enhancement  
Opportunities**  
(14.52 acres, 7%)

**Developed or  
Manicured Lawn**  
(13 acres, 6.3%)









# RECOMMENDATION CATEGORIES



**TRAILS AND  
PUBLIC ACCESS**



**PUBLIC  
EDUCATION AND  
INTERPRETATION**



**RESOURCE  
CONSERVATION AND  
PRESERVATION**



**OPERATIONS AND  
MAINTENANCE**



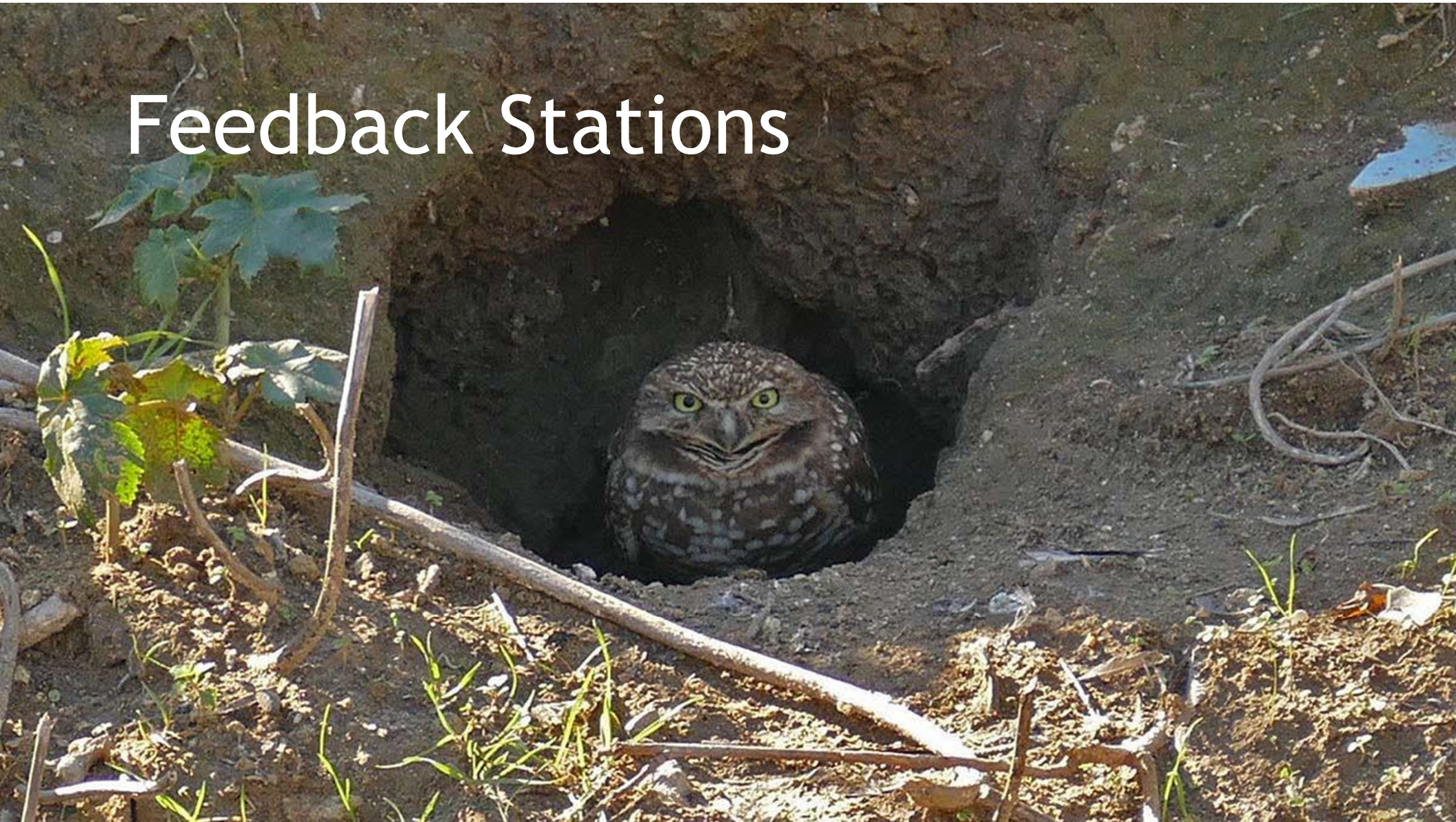
**SITE ACTIVITIES  
AND USES**

“A critical function of the Master Plan is to define ways of providing for public uses that are compatible with and complement the restored park concept”

City of Costa Mesa Fairview Park Master Plan, updated 2008



# Feedback Stations



# Station Instructions

- ▶ Visit the five stations. Each will cover the draft recommendations and the categories they fall under. You also have the recommendations in your handout.
- ▶ Review the information on the posters. Provide feedback to station captains about the content and discuss with your peers.
- ▶ Write down your feedback regarding the recommendations on your comment cards. Hand your comment card to the station staff once you have finished.
- ▶ Once you have completed your visit to a station, feel free to move onto the next one.



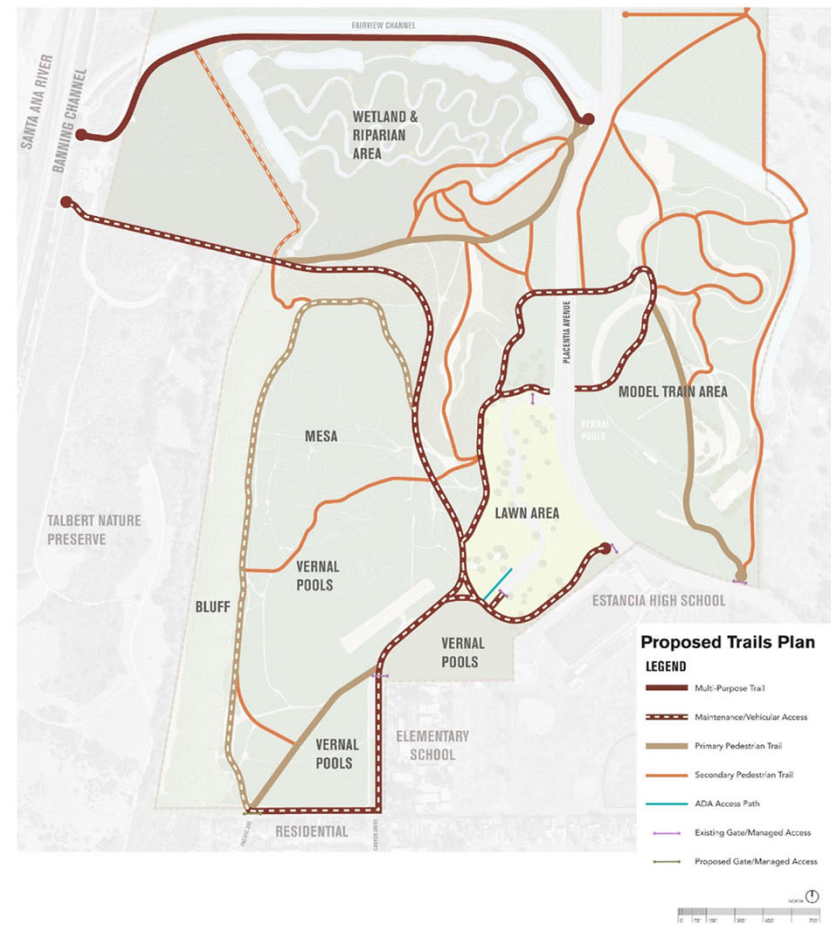


# Trails and Public Access



## Trails and Public Access *Senderos y acceso público*

What additional feedback would you like to share regarding the recommendations for trails and public access? / ¿Qué comentarios adicionales le gustaría compartir con respecto a las recomendaciones para senderos y acceso público?





# Public Education and Interpretation



## Public Education and Interpretation *Educación Pública e Interpretación*

### Existing Interpretive and Signage Elements at Fairview Park

*Elementos interpretativos y de señalización existentes en Fairview Park*



### 2008 Master Plan: Interpretive and Educational Recommendations

*Plan Maestro del 2008: Recomendaciones Educativas e Interpretativas*





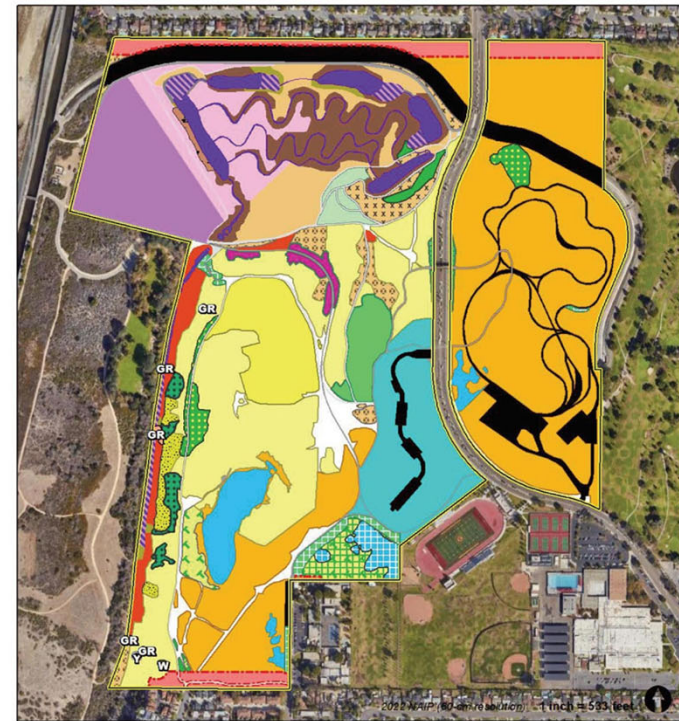


# Resource Conservation and Preservation



## Resource Conservation & Preservation Conservación y preservación de los recursos

### Vegetation Map Mapa de la vegetación



Fairview Park Boundary

Map Code	2023 Vegetation Map Unit Common Name
1201	Black Willow - Red Willow Riparian Woodland and Forest
1202	Phacelia California - Red Willow Woodland and Forest
1203	Shrubland
1204	Shrubland
1205	Shrubland
1206	Shrubland
1207	Shrubland
1208	Shrubland
1209	Shrubland
1210	Shrubland
1211	Shrubland
1212	Shrubland
1213	Shrubland
1214	Shrubland
1215	Shrubland
1216	Shrubland
1217	Shrubland
1218	Shrubland
1219	Shrubland
1220	Shrubland
1221	Shrubland
1222	Shrubland
1223	Shrubland
1224	Shrubland
1225	Shrubland
1226	Shrubland
1227	Shrubland
1228	Shrubland
1229	Shrubland
1230	Shrubland
1231	Shrubland
1232	Shrubland
1233	Shrubland
1234	Shrubland
1235	Shrubland
1236	Shrubland
1237	Shrubland
1238	Shrubland
1239	Shrubland
1240	Shrubland
1241	Shrubland
1242	Shrubland
1243	Shrubland
1244	Shrubland
1245	Shrubland
1246	Shrubland
1247	Shrubland
1248	Shrubland
1249	Shrubland
1250	Shrubland
1251	Shrubland
1252	Shrubland
1253	Shrubland
1254	Shrubland
1255	Shrubland
1256	Shrubland
1257	Shrubland
1258	Shrubland
1259	Shrubland
1260	Shrubland
1261	Shrubland
1262	Shrubland
1263	Shrubland
1264	Shrubland
1265	Shrubland
1266	Shrubland
1267	Shrubland
1268	Shrubland
1269	Shrubland
1270	Shrubland
1271	Shrubland
1272	Shrubland
1273	Shrubland
1274	Shrubland
1275	Shrubland
1276	Shrubland
1277	Shrubland
1278	Shrubland
1279	Shrubland
1280	Shrubland
1281	Shrubland
1282	Shrubland
1283	Shrubland
1284	Shrubland
1285	Shrubland
1286	Shrubland
1287	Shrubland
1288	Shrubland
1289	Shrubland
1290	Shrubland
1291	Shrubland
1292	Shrubland
1293	Shrubland
1294	Shrubland
1295	Shrubland
1296	Shrubland
1297	Shrubland
1298	Shrubland
1299	Shrubland
1300	Shrubland
1301	Shrubland
1302	Shrubland
1303	Shrubland
1304	Shrubland
1305	Shrubland
1306	Shrubland
1307	Shrubland
1308	Shrubland
1309	Shrubland
1310	Shrubland
1311	Shrubland
1312	Shrubland
1313	Shrubland
1314	Shrubland
1315	Shrubland
1316	Shrubland
1317	Shrubland
1318	Shrubland
1319	Shrubland
1320	Shrubland
1321	Shrubland
1322	Shrubland
1323	Shrubland
1324	Shrubland
1325	Shrubland
1326	Shrubland
1327	Shrubland
1328	Shrubland
1329	Shrubland
1330	Shrubland
1331	Shrubland
1332	Shrubland
1333	Shrubland
1334	Shrubland
1335	Shrubland
1336	Shrubland
1337	Shrubland
1338	Shrubland
1339	Shrubland
1340	Shrubland
1341	Shrubland
1342	Shrubland
1343	Shrubland
1344	Shrubland
1345	Shrubland
1346	Shrubland
1347	Shrubland
1348	Shrubland
1349	Shrubland
1350	Shrubland
1351	Shrubland
1352	Shrubland
1353	Shrubland
1354	Shrubland
1355	Shrubland
1356	Shrubland
1357	Shrubland
1358	Shrubland
1359	Shrubland
1360	Shrubland
1361	Shrubland
1362	Shrubland
1363	Shrubland
1364	Shrubland
1365	Shrubland
1366	Shrubland
1367	Shrubland
1368	Shrubland
1369	Shrubland
1370	Shrubland
1371	Shrubland
1372	Shrubland
1373	Shrubland
1374	Shrubland
1375	Shrubland
1376	Shrubland
1377	Shrubland
1378	Shrubland
1379	Shrubland
1380	Shrubland
1381	Shrubland
1382	Shrubland
1383	Shrubland
1384	Shrubland
1385	Shrubland
1386	Shrubland
1387	Shrubland
1388	Shrubland
1389	Shrubland
1390	Shrubland
1391	Shrubland
1392	Shrubland
1393	Shrubland
1394	Shrubland
1395	Shrubland
1396	Shrubland
1397	Shrubland
1398	Shrubland
1399	Shrubland
1400	Shrubland
1401	Shrubland
1402	Shrubland
1403	Shrubland
1404	Shrubland
1405	Shrubland
1406	Shrubland
1407	Shrubland
1408	Shrubland
1409	Shrubland
1410	Shrubland
1411	Shrubland
1412	Shrubland
1413	Shrubland
1414	Shrubland
1415	Shrubland
1416	Shrubland
1417	Shrubland
1418	Shrubland
1419	Shrubland
1420	Shrubland
1421	Shrubland
1422	Shrubland
1423	Shrubland
1424	Shrubland
1425	Shrubland
1426	Shrubland
1427	Shrubland
1428	Shrubland
1429	Shrubland
1430	Shrubland
1431	Shrubland
1432	Shrubland
1433	Shrubland
1434	Shrubland
1435	Shrubland
1436	Shrubland
1437	Shrubland
1438	Shrubland
1439	Shrubland
1440	Shrubland
1441	Shrubland
1442	Shrubland
1443	Shrubland
1444	Shrubland
1445	Shrubland
1446	Shrubland
1447	Shrubland
1448	Shrubland
1449	Shrubland
1450	Shrubland
1451	Shrubland
1452	Shrubland
1453	Shrubland
1454	Shrubland
1455	Shrubland
1456	Shrubland
1457	Shrubland
1458	Shrubland
1459	Shrubland
1460	Shrubland
1461	Shrubland
1462	Shrubland
1463	Shrubland
1464	Shrubland
1465	Shrubland
1466	Shrubland
1467	Shrubland
1468	Shrubland
1469	Shrubland
1470	Shrubland
1471	Shrubland
1472	Shrubland
1473	Shrubland
1474	Shrubland
1475	Shrubland
1476	Shrubland
1477	Shrubland
1478	Shrubland
1479	Shrubland
1480	Shrubland
1481	Shrubland
1482	Shrubland
1483	Shrubland
1484	Shrubland
1485	Shrubland
1486	Shrubland
1487	Shrubland
1488	Shrubland
1489	Shrubland
1490	Shrubland
1491	Shrubland
1492	Shrubland
1493	Shrubland
1494	Shrubland
1495	Shrubland
1496	Shrubland
1497	Shrubland
1498	Shrubland
1499	Shrubland
1500	Shrubland



# Operations and Maintenance



## Operations and Maintenance Operaciones y Mantenimiento

### Long-Term Invasive Plant Management Plan Plan de Manejo de Plantas Invasoras a Largo Plazo



<p><b>GOALS AND OBJECTIVES</b></p> <p>The primary goal of this plan is to manage the invasive plant species on the site and to prevent their spread to adjacent areas.</p> <p><b>Key Objectives Include:</b></p> <ol style="list-style-type: none"> <li>1. To identify and map all invasive plant species on the site.</li> <li>2. To develop and implement a management plan for each species.</li> <li>3. To monitor the progress of the management plan and to adjust it as needed.</li> <li>4. To educate the public and staff about the importance of invasive plant management.</li> </ol> <p><b>Specific Goals for the Management Plan:</b></p> <ol style="list-style-type: none"> <li>1. To reduce the number of invasive plant species on the site by 50% within five years.</li> <li>2. To prevent the spread of invasive plant species to adjacent areas.</li> <li>3. To maintain the site in a state of low invasive plant infestation.</li> </ol> <p><b>Long-Term Objectives:</b></p> <ol style="list-style-type: none"> <li>1. To maintain the site in a state of low invasive plant infestation for the long term.</li> <li>2. To prevent the spread of invasive plant species to adjacent areas.</li> <li>3. To maintain the site in a state of low invasive plant infestation for the long term.</li> </ol>	<p><b>MULTI-OBJECTIVES</b></p> <p>The multi-objective approach to invasive plant management is based on the following principles:</p> <ul style="list-style-type: none"> <li>1. To identify and map all invasive plant species on the site.</li> <li>2. To develop and implement a management plan for each species.</li> <li>3. To monitor the progress of the management plan and to adjust it as needed.</li> <li>4. To educate the public and staff about the importance of invasive plant management.</li> </ul> <p><b>Specific Objectives for the Management Plan:</b></p> <ol style="list-style-type: none"> <li>1. To reduce the number of invasive plant species on the site by 50% within five years.</li> <li>2. To prevent the spread of invasive plant species to adjacent areas.</li> <li>3. To maintain the site in a state of low invasive plant infestation.</li> </ol> <p><b>Long-Term Objectives:</b></p> <ol style="list-style-type: none"> <li>1. To maintain the site in a state of low invasive plant infestation for the long term.</li> <li>2. To prevent the spread of invasive plant species to adjacent areas.</li> <li>3. To maintain the site in a state of low invasive plant infestation for the long term.</li> </ol>
--	--

### Support Facilities For City Staff and Community Instalaciones de Apoyo Para el Personal de la Ciudad y la Comunidad







# Site Activities and Uses



## Site Activities and Uses *Actividades y el Uso del Parque*

Proposed Site Features  
*Características propuestas del sitio*



## SCHEDULE- NEXT STEPS

- ▶ November 2024: DRAFT Master Plan Update (30-day public review)
- ▶ December 2024: City Council Study Session
- ▶ January 2024: DRAFT Initial Study/Mitigated Negative Declaration (30-day public review)
- ▶ February 2025: Final Master Plan Update
- ▶ February 2025: New and Updated Environmental Documents

